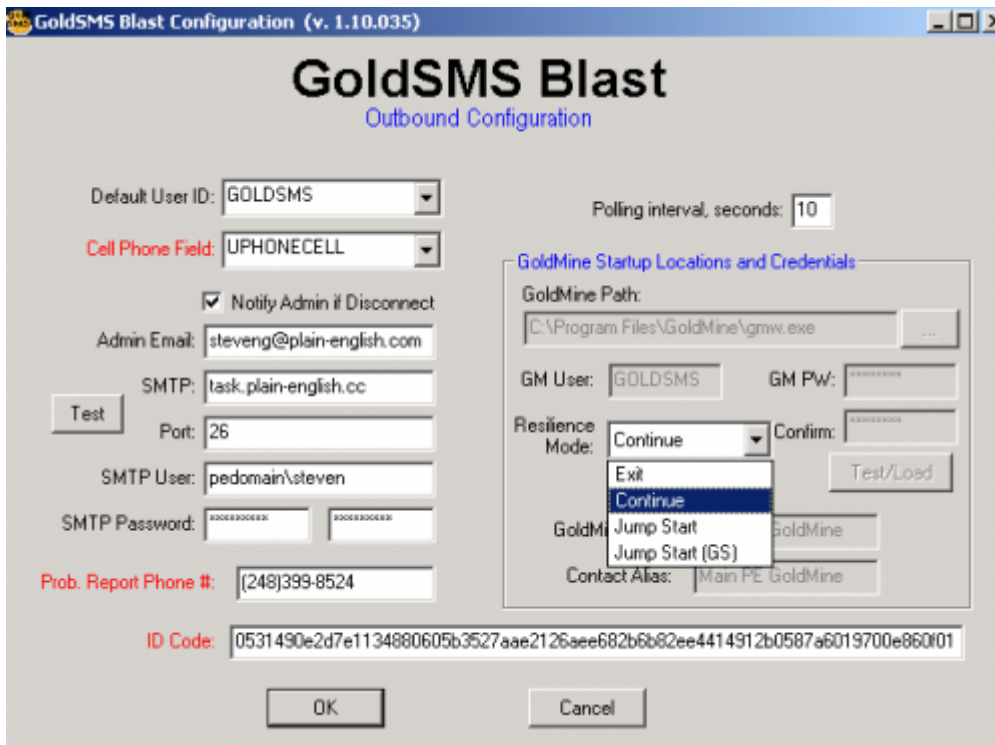


Components of GoldSMS

GoldSMS Blast Config



We'll draw your attention to a few of the less-obvious features of GoldSMS Blast.

- You must specify a single specific field in which GoldSMS Blast will find the contact's cell number. One implication of this is that GoldSMS Blast cannot, at present, be used to Text “additional” contacts.
- The problem report phone number is the number your recipients will be instructed to call should they have any questions, or wish to complain, or ask that they not receive further texts.
- As for the ID Code, well, nothing will happen without it!
- If the Resilience Mode is set to one of the Jump Start options, GoldSMS Blast will try to actively re-start GoldMine (in DDE or GoldSync silent mode) and, so, will need the appropriate login information.
- If Resilience Mode is set to Continue, GoldSMS Blast will simply keep trying to poll the database.
- If Resilience Mode is set to Exit, GoldSMS Blast will simply shut down.

From: <http://plain-english.com/goldsmsdoc/> - **GoldSMS User and Admin Guide**

Permanent link: http://plain-english.com/goldsmsdoc/doku.php?id=goldsms_blast_config

Last update: **2014/02/17 08:35**

